



Hollow Fiber Inside-out UF Membrane Module **HFUF--08PXF Series SAPFIRIKA**

Description

SAPFIRIKA HFUF—08PXF ultrafiltration membrane modules are equivalents of Pentair X-flow Aquaflex UF modules used for production of process, potable water and wastewater. Major applications are filtration of surface water, potable water, industrial wastewater and municipal sewage.

Ultrafiltration modules use naturally hydrophilic PES hollow fiber ultra-filtration membrane with excellent performance.

The mode of operation is either dead-end or cross-flow (though cross flow mode is only used in certain circumstances), backwash (with filtrate only) at regular intervals and chemically enhanced backwash are required for the continuous operation.

- A nominal pore size of 0.02 μm
- Microporous symmetric structure
- Naturally hydrophilic membrane composed of a blend of polyethersulfone and polyvinylpyrrolidone
- High performance and very good anti-fouling characteristic
- Typical filtrate quality SDI < 3, turbidity < 0.1 NTU
- Membrane filtration provides 99.9999% (LOG 6) reduction of bacteria (*pseudomonas diminuta*) and 99.99% (LOG 4) reduction of virus (MS2 colifages) by mechanical means.

- High quality raw material
- High thermal and chemical solvent resistance
- High chemical tolerance for cleaning
- Optimized design, high resistance to fouling
- Direct and economical module replacement

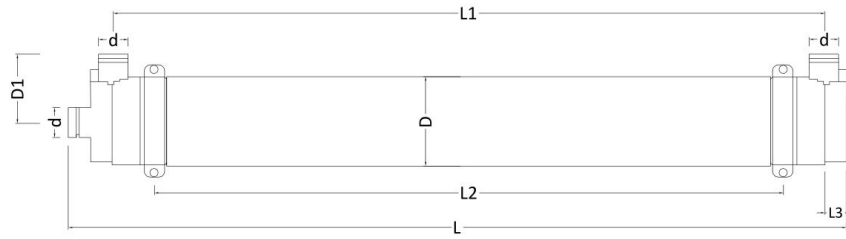
Applications

- Surface water
- Potable water
- Seawater desalination
- Pre-treatment of industrial water
- Industrial wastewater
- Municipal sewage





Dimensions



Sapfirika Model	Pentair X-flow Aquaflex Equivalent	L (mm/inch)	L1 (mm/inch)	L2 (mm/inch)	L3 (mm/inch)	D (mm/inch)	D1 (mm/inch)	Feed, Filtrate, Concentrate connection d (mm/inch)
HFUF4008PXF	XF40 Xiga 40	1,801/ 70.91	1,638/ 64.49	1,527.5/60.14	55/2.16	200/7.9	155/6.1	73.2/2.88
HFUF40C08PXF	XF40C			1,537.5/60.51		200/7.9	155/6.1	
HFUF5508PXF	XF55	1,902/ 74.88	1,742/ 68.58	1,537.5/60.51		220/8.66	166/6.5	
HFUF6408PXF	XF64							

Specification

Specifications	Parameters			
Model	HFUF4008PXF	HFUF40C08PXF	HFUF5508PXF	HFUF6408PXF
Effective membrane area (m ² /ft ²)	40/430	40/430	55/590	64/689
Dry weight of membrane module	25 kg/55 lbs	27 kg/59 lbs	34 kg/75 lbs	
Wet weight filled with water	55 kg/121 lbs	57 kg/125 lbs	66 kg/145 lbs	
Fiber diameter (mm/inch)	0.8/0.031			0.77/0.03
Membrane material	PES (polyether sulfone)			
Housing material	PVC			
Flow distributor material	PVC			
Potting material	Polyurethane resin			
Max. system pressure	300 kPa (43 psi)			
Max. trans-membrane pressure	300 kPa (43 psi)			
Max. backwash pressure	300 kPa (43 psi)			
Temp. range	0-40°C (32-104°F)			
pH-Continuous operation @ 25°C	2-12			
pH-CIP @ 25°C	1-13			